



# INDUSTRIALAIR

WHERE CLEAN AIR MATTERS

## Product Overview

**IA-60 | IA-120 | IA-120-2**



# IA-120-2



- 1180 CFM: for machines with cabinets up to 7080 cubic feet
- Low energy usage: Less than 0.40 kW
- High Efficiency: 99% efficient down to 0.3 microns by using double pass filtration.

# IA-120



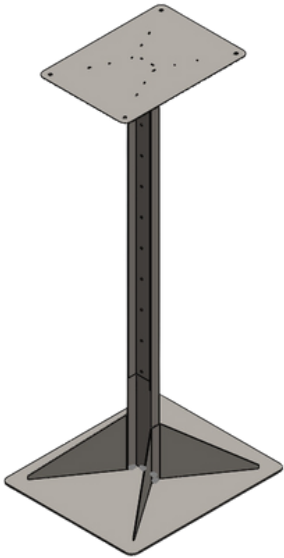
- 1180 CFM: for machines with cabinets up to 7080 cubic feet
- Low energy usage: Less than 0.39 kW
- High Efficiency: 95% efficient down to 0.3 microns

# IA-60



- 580 CFM: for machines with cabinets up to 3480 cubic feet
- Small footprint: 13-1/2" x 20-1/4"
- Low energy usage: Less than 0.28 kW
- High Efficiency: 99% efficient down to 0.3 microns by using double-pass filtration

# ACCESSORIES

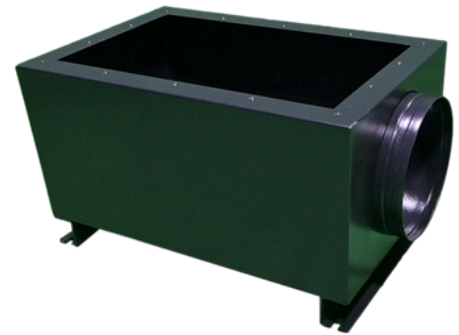


## Stand Mount

- Our stand mount is one of the options for mounting, if there is not space to mount directly to the machine, or if one IndustriAir is being ducted to multiple machines

## Custom Plenums

- We offer a standard plenum with legs for mounting directly to machines.
- We can also work with you to design custom plenums to fit specific machines.



## Flex Duct

- Flexible, oil-resistant ductwork to connect your IndustriAir to the source of smoke.



# APPLICATIONS

- Swiss Machining
- CNC Sawing
- CNC Grinding
- Rotary Transfer
- Multi-Spindle Screw Machining
- Gear Cutting and Hobbing
- Coldforming
- Threading
- Centerless Grinding

# BENEFITS

- Up to 99% efficiency on 0.3-micron particles
- Low energy consumption
- Reusable filters
- Coolant returned to machine
- Vertical and horizontal orientation options
- Easy Installation
- Extremely low lifetime cost
- Best service and support

## QUESTIONS?



1-833-216-4659



[contact@industri-air.com](mailto:contact@industri-air.com)

